

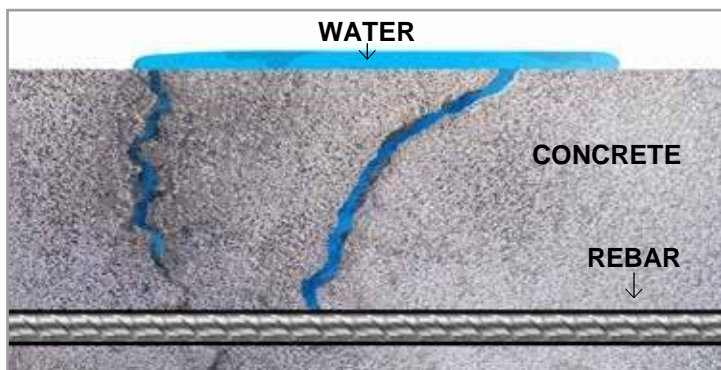


# Crack Healing Additive for Concrete

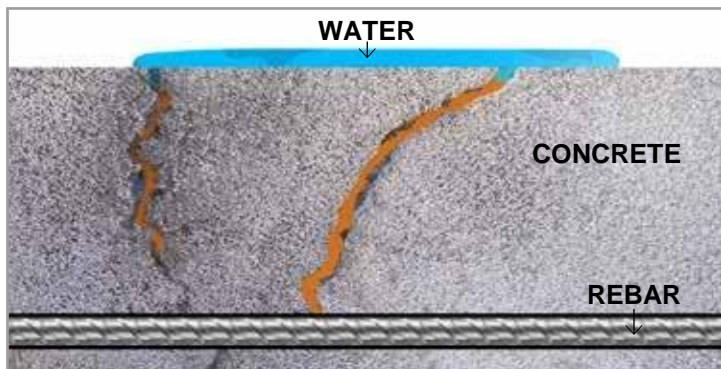
## MasterLife<sup>®</sup> CH 500

MasterLife CH 500 is a powder-based admixture containing a blend of specialized polymers, which when added to fresh concrete mix imparts the property of auto-healing and closing of microcracks in treated structures. MasterLife CH 500 is compatible for use with all types of cementitious material and other chemical admixtures used in the production of concrete.

### Mechanism of Action




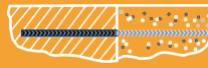
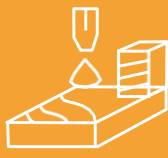


Microcracks occurring in concrete allow the ingress and passage of water, chlorides and other harmful substances that lead to corrosion of reinforcement and damage to the structure.



When treated with MasterLife CH 500, the specialized polymers lie dormant within the pores and capillaries of concrete and are activated on contact with ingressed water. What follows is a chemical reaction resulting in the formation of non-soluble gel that plugs and heals the crack in concrete over time.

### Features & Benefits

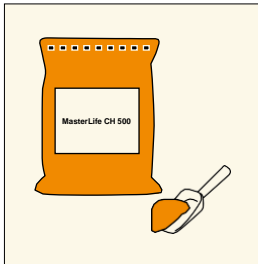
-  Pre-packaged scoop allows easy and accurate addition into concrete
-  Closes and seals micro-cracks in concrete
-  Reduces leakages and seepages
-  Protects against corrosion of rebar
-  Ensures durability of concrete

## Areas of Application

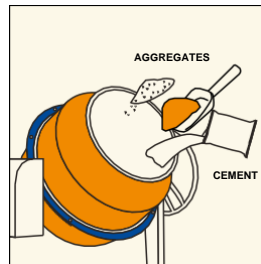
MasterLife CH 500 can be used to treat and impart crack healing properties to all types of concrete used in residential, commercial and industrial construction. It is highly recommended for use in the following areas:

- Slabs
- Beams and Columns
- Flat and Sloped Roofs
- Raft and Isolated Footings

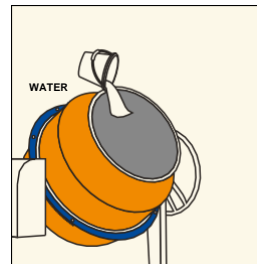
## Adopt the following procedure to treat your concrete with MasterLife CH 500



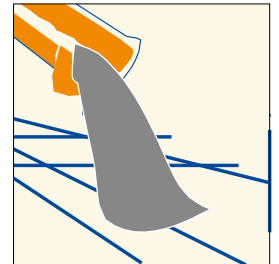
Open a bag of MasterLife CH 500 and extract the measuring scoop



Add one heaping scoopful of MasterLife CH 500 per bag of cement consumed and dry mix with cementitious binder, sand and coarse aggregates



Add the required water into the mixer as per the water cement ratio and mix judiciously. Add MasterPel 777 (Optional)



Place, compact and cure the concrete as per standard practice

## Compatibility

MasterLife CH 500 is compatible with most admixtures used in the production of quality concrete including normal, other mid-range and high-range water-reducing admixtures, air entrainers, accelerators, retarders and extended set-control admixtures.

MasterLife CH 500 is compatible with all types of cement conforming to IS: 269-2015, IS: 1489 and IS: 12089 and with other supplementary cementitious binders.

## Packing

MasterLife CH 500 is available in 15kg bag with measuring scoop.

## Storage and Shelf Life

MasterLife CH 500 must be stored in a cool & dry area at temperatures between 5°C and 45°C. Material should not come in contact to splashing or stagnated water. Store under cover, out of direct sunlight and protect from extremes of temperature.

Shelf life is 6 months when stored as above.

Failure to comply with the recommended storage conditions may result in premature deterioration of the product or packaging. For specific storage advice consult your local Master Builders Solutions representative.

## Master Builders Solutions India Private Limited

Registered office: Plot No D-126, TTC Industrial Area, MIDC,

Shiravane, Navi Mumbai, 400706. Maharashtra, India.

Phone No.: +91 8657906776

Email: [Construction-india@mbcc-group.com](mailto:Construction-india@mbcc-group.com)

Visit us at [www.master-builders-solutions.com/en-in](http://www.master-builders-solutions.com/en-in)

© = Registered trademark of a MBCC Group member in many countries of the world.